



Wright Marshall  
Estate Agents

## Beechwood Tabley Road Knutsford WA16 0PQ



**£90,000**

1 Princess Street, Knutsford, Cheshire, WA16 6BY  
T. 01565 621624  
Knutsford@wrightmarshall.co.uk /  
Cheshirelettings@wrightmarshall.co.uk



Located a short distance from Knutsford town centre, within the highly sought-after Beechwood development, this well-presented one-bedroom ground floor apartment has been well maintained throughout.

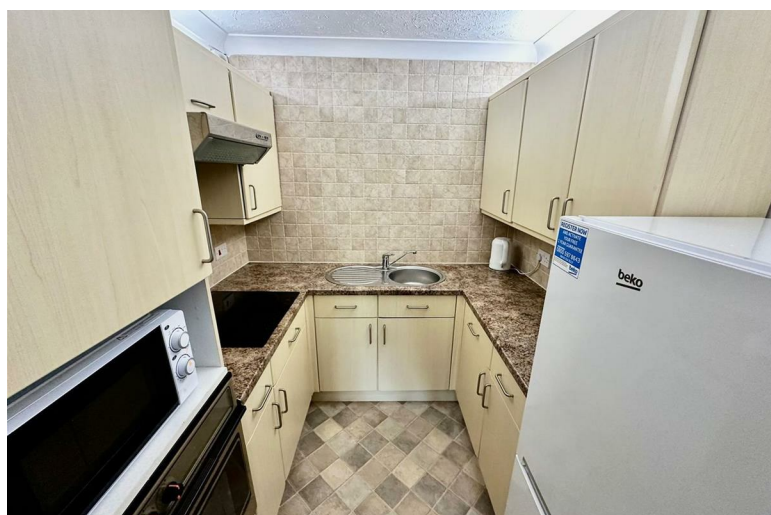
Beechwood is a well-regarded development, popular for its convenient level walk into Knutsford and its strong sense of community. Residents can enjoy access to a large communal lounge, with opportunities to socialise as much or as little as they wish. Organised trips and a private bus service to local towns are also available.

The apartment benefits from its own private entrance off the communal hallway, along with a secure telecom entry system. Upon entering, you are welcomed by a spacious hallway with a useful built-in storage cupboard. The hallway leads through to a generous lounge/dining room, featuring a fireplace and a window overlooking the attractive communal gardens and the Heath beyond.

The double bedroom, complete with fitted wardrobes, also enjoys the same pleasant outlook.

The accommodation is completed by a modern fitted kitchen, offering a range of integrated appliances, and a contemporary three-piece shower room with a walk-in double shower for added convenience.

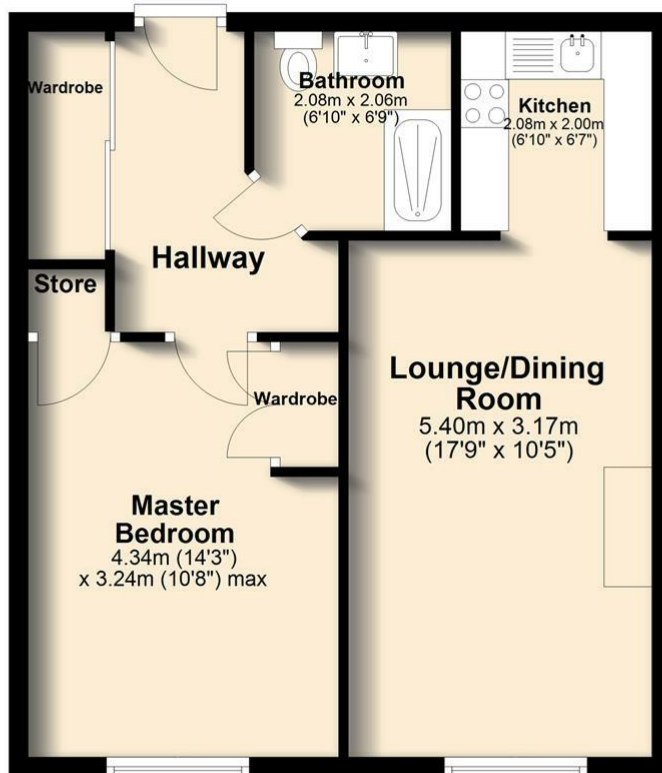
The property is offered to the market with no onward chain, making it an ideal purchase for a straightforward move.





## Ground Floor

Approx. 49.0 sq. metres (527.8 sq. feet)



Total area: approx. 49.0 sq. metres (527.8 sq. feet)

All floorplans provided are for guidance only. Please check all dimensions before making any decisions reliant upon them.

Plan produced using PlanUp.

## 12 Beechwood

These particulars, whilst believed to be accurate are set out as a general outline only for guidance and do not constitute any part of an offer or contract. Intending purchasers should not rely on them as statements of representation of fact, but must satisfy themselves by inspection or otherwise as to their accuracy. No person in this firm's employment has the authority to make or give any representation or warranty in respect of the property.